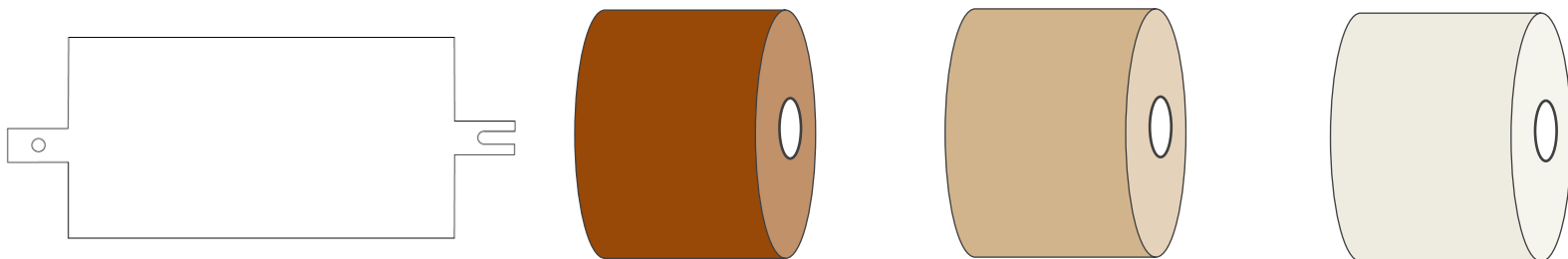


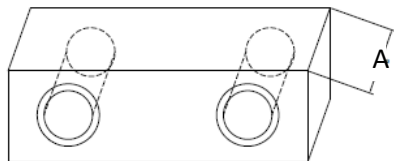
# Ttarp Company Die Cutting Supplies

PRESS SIZE	ALUMINUM COVER SHEET PART NUMBER	MAKE READY PART NUMBER (50 pcs. / box)	STOCK CUTTING BELT MATERIAL TYPES AND WIDTHS		
26 x 20	P-5300.3020	P-5400.3020	POLY COATED PAPER 20 or 24" x 3000 LN ft		MYLAR 12 or 15 or 18 or 20 or 24" x 200 LN ft
32 x 28	P-5300.3628	P-5400.3628	POLY COATED PAPER 30 or 31" x 3000 LN ft	TTARP TAN PAPER 29 or 30 or 31" x 1000 LN ft	MYLAR 30" x 200 LN ft
32 x 32	P-5300.3632	P-5400.3632			
39 x 28	P-5300.4328	P-5400.4328	POLY COATED PAPER 37" x 3000 LN ft	TTARP TAN PAPER 37" x 1000 LN ft	MYLAR 36 or 37" x 200 LN ft
39 x 32	P-5300.4332	P-5400.4332			



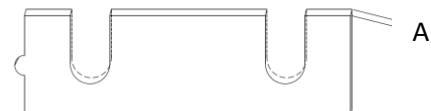
## STOP BLOCKS 1 1/2" x 5"

RULE SIZE	STOP BLOCK PART NUMBER	THICKNESS (A)	SOCKET HEAD CAP SCREW 1/4-20 x L
.937"	P-5131.0500	1/2"	5/8"
1 1/8"	P-5131.0625	5/8"	
1 1/4"	P-5131.0750	3/4"	
1 1/2"	QTY (2) P-5131.0500	1"	1 1/8"
2"	QTY (2) P-5131.0750	1 1/2"	1 3/8"



## STOP BLOCKS SHIMS 1 1/2" x 5"

SHIM THICKNESS (A)	STOP BLOCK SHIM PART NUMBER
.002"	P-5132.0002
.005"	P-5132.0005
.020"	P-5132.0020
.050"	P-5132.0050
.125"	P-5132.0125



## PRESS PREVENTATIVE MAINTENANCE SCHEDULE

**WARNING!!!! Improper procedure may result in serious injury to personnel and severe damage to equipment**

After operating the press for two weeks, inspect the make sure all nuts, bolts, set screws and chains are tight. Recheck every two months.

Before starting any maintenance, follow proper lock out tag out (LOTO) procedures

Please review this suggested list and schedule. Your application and environment may alter the schedule. Please adjust accordingly.

Item	Daily	Monthly	6 Months	Yearly	As Needed
All machine guards installed	X				
All guard doors switches are operational	X				
Emergency stop buttons operational	X				
Inspect platens and die plates for wear	X				
Clean and clear debris from platens and die plates	X				
Inspect corners of bottom wear plate for wear	X				
Tighten die stops mounting bolts	X				
Clean and clear debris from die stops	X				
Inspect hydraulic hoses for oil leaks	X				
Inspect hydraulic tank for oil leaks	X				
Inspect hydraulic pump for oil leaks	X				
General housekeeping of machine and immediate area	X				
Inspection of loose fittings on hydraulic hoses		X			
Inspection of damaged hydraulic hoses		X			
Inspection of tension and alignment of pinch rollers		X			
Check / tighten (4) 1/2" bolts on ram cylinder flange		X			
Check for gap between cylinder rod and cylinder nut		X			
Clean / replace fan filter on main electrical enclosure		X			
Replace dirty air filter on oil cooler		X			
Inspect all sprockets, chain for wear and proper tension		X			
Check of hydraulic oil level			X		
Change hydraulic oil filter			X		
Grease roller bearings			X		
Re-level machine				X	
Tighten all nuts, bolts and torsion bars				X	
Inspect / adjust ram guide pads to be touching legs				X	
Hydraulic oil analyzed for degradation				X	
Hydraulic oil replacement (average lifespan is 2 years)					X